

ANNUAL REPORT 2005



JEFFERSON COUNTY BOARD OF ELECTIONS

JANUARY 31, 2006

January 31, 2006

To Jefferson County Board of Legislators:

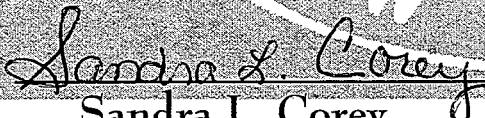
The Jefferson County Board of Elections respectfully submits its annual report for your inspection.

We hope that this report will keep you updated on the operations of the Board of Elections.

Sincerely,


James E. Fitzpatrick
Republican Commissioner


Sean M. Hennessey
Democrat Commissioner


Sandra L. Corey
Deputy Commissioner



Cindy S. Corbett
Deputy Commissioner

TABLE OF CONTENTS

INTRODUCTION

Departmental Description

OBJECTIVES AND PERFORMANCE

Types of Services and Assistance
Organizational chart

THE YEAR IN REVIEW

Enrollment 2005
Voter Turnout
Voter Turnout by Legislative district
Statistical information summary
Narrative

VOTER REGISTRATION ACTION PLAN

INTRODUCTION

The Jefferson County Board of Elections conducts all National, State, County, and Town Elections. Although the Board of Elections is a county agency, its structures, responsibilities and duties are mandated by New York State election law, while its administrative procedures, directions, guidelines, rules and regulations are defined by the New York State Board of Elections.

Departmental Description

The board has a full-time staff of four employees with equal representation of Democrats and Republicans as mandated by New York State Election Law. The Board is administered by two part-time commissioners who serve a two-year term. The commissioners are elected by the County committee of each political party and their appointment is confirmed by the County Board of Legislators. The Commissioners each have a deputy who works full-time in the board office and runs the day to day operations of the office. The Deputy Commissioners are assisted by two full-time registration clerks, and two part-time employees.

The staff of the County Board of Elections provides the technical, clerical and mechanical skills necessary to provide services, information and statistical data to County Legislators, other departments, governmental agencies and the public. The Board conducts all Federal, State, County, Town and many of the Village elections in Jefferson County.

OBJECTIVES AND PERFORMANCE

to provide for the registration of voters within Jefferson County, and the conduct of elections as required by federal and state law.



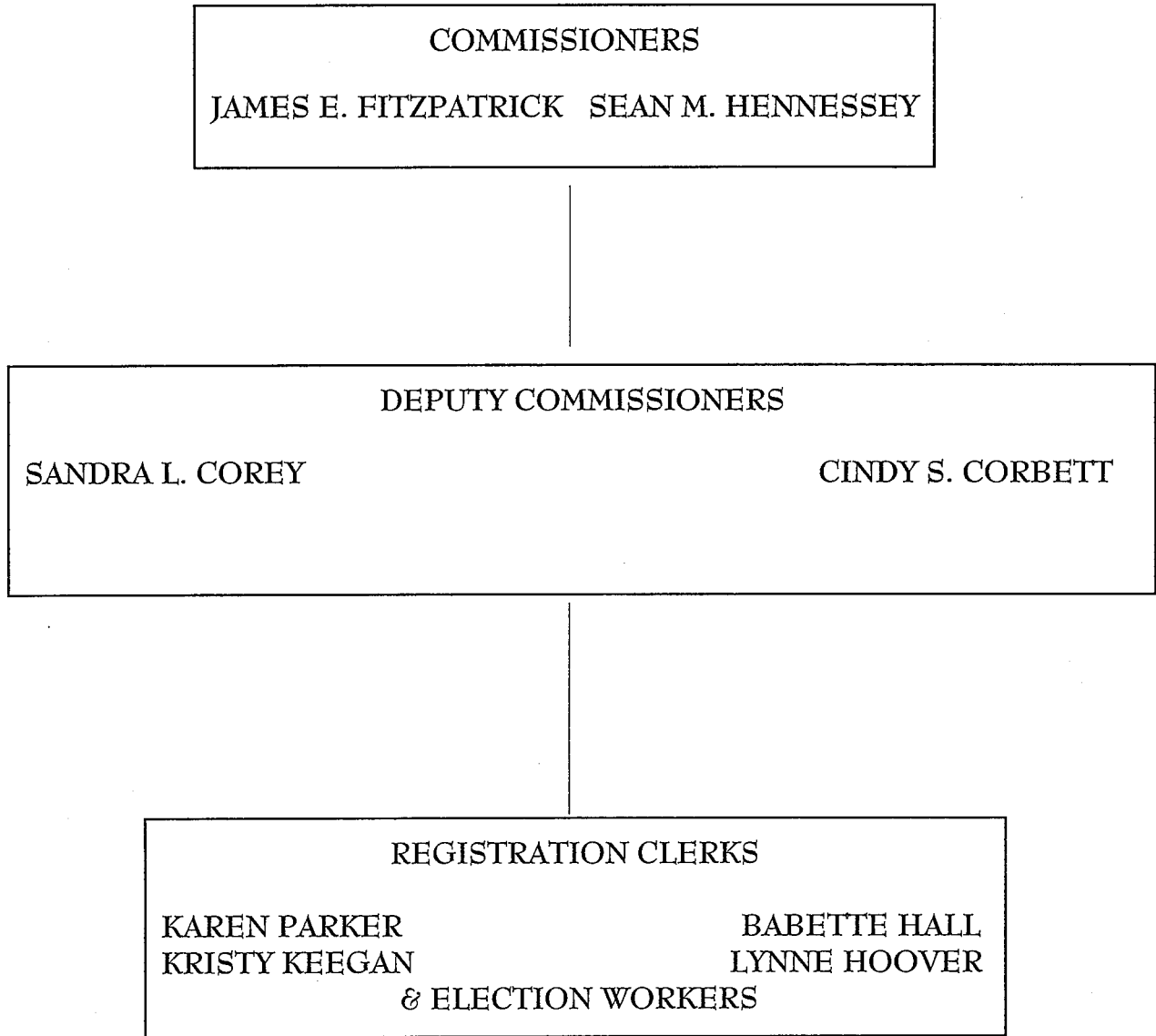
Types of Services and Assistance

- To provide registration forms and assistance to those persons wishing to register
- To provide training of election inspectors in procedures used in elections.
- To provide training of machine custodians in procedures of the set-up and repair of voting machines.
- To provide assistance to Town and Village Clerks, school districts and fire districts relative to their elections.
- To provide a directory of Elected Officials in Jefferson County.
- To provide educational background on the procedures of registering to vote and voting to the schools and organizations.

- To provide lists of registered voters and statistical data on registrations, enrollment and voting.
- To assist other county and state departments.
- To provide assistance to candidates and potential candidates.
- To aid political parties with procedures of the Election Law.
- To conduct Federal, State, County, Town and Village Elections.

ORGANIZATIONAL CHART

JEFFERSON COUNTY BOARD OF ELECTIONS



NEW YORK STATE BOARD OF ELECTIONS
2006 COUNTY BOARD DIRECTORY

Jefferson COUNTY

BOARD ADDRESS: 175 Arsenal St
Watertown, Ny 13601

BOARD PHONE # 315-785-3027
BOARD FAX # 315-785-5197
BOARD WEB SITE ADDRESS www.co.jefferson.ny.us

REP. Commissioner James Fitzpatrick
E-Mail Address _____
Home Address 837 Holcomb St
Watertown, Ny 13601
Home Phone 315-782-3636

DEM. Commissioner Sean Hennessey
E-Mail Address _____
Home Address 164 Remington St W.
PO Box 1603, Black River, Ny 136
Home Phone 315-775-0570

REP. Deputy Comm. Sandra Corey
E-Mail Address sandyc@co.jefferson.ny.us
Home Address 225 Main St
Antwerp, Ny 13608
Home Phone 315-659-2434

DEM. Deputy Comm. Cindy Corbett
E-Mail Address cindyc@co.jefferson.ny.us
Home Address 520 Binsse St
Watertown, Ny 13601
Home Phone 315-788-3044

Additional Pertinent Staff

Title Registration Clerk
Name Karen Parker
Title Registration Clerk
Name Kristy Keegan
Title _____
Name _____
Title _____
Name _____

Additional Pertinent Staff

Title Registration Clerk
Name Babette Hall
Title Registration Clerk
Name Lynn Hoover
Title _____
Name _____
Title _____
Name _____

January - February - March - April

Another year has begun. This is the year we hope to see laws changed so we can begin to work towards new machines and training voters to use them. The sooner we can start the less election day problems we will have in 2006.

We intended to go to the Commissioners' Conference this year, but it is so far away and the weather doesn't always cooperate. After we heard there was no laws passed and no chance they would be passed we decided to pass on this conference.

We sent the town and village clerks the usual paperwork to see who is up for elections in 2005, pay scales of election workers, and polling place survey. We also sent out the oath of office to the machine custodians to be signed and sent back to us. We sent the names of the inspectors and the extras we have on hand to the town chairman of the Republican and Democrat parties asking them to review and send back any changes or new names they might have.

These months are spent going through files and paperwork to see what we need to destroy and what we need to keep. The registration clerks print out lists from the computer of all registered voters and go through the file to make sure the list and the actual registrations match. Once that is done they go on to the inactive file and do the same.

Most of the office took at least a one week and some of the lucky ones took a two week vacation during this time. This is set up so we always have one deputy in the office at all times and at least one from each party in the office. We have two part time clerks (one from each party). They each work two days per week and during vacations which is very helpful as the work doesn't get backed up.

May - June - July - August

We went to the State BOE Conference in Syracuse the 2nd, 3rd, and 4th of May. We got some good news while there. Our state representatives agreed on the election laws that needed to be changed to follow the federal HAVA laws. New York is now on its way to comply with the HAVA laws and the money given to our state will be used on machines and training and not given back to Washington. The conference was very interesting and many people were there to look at new machines. There was a lot of discussion about machines and some were very opinionated as to what everyone should buy. The majority of the counties realize this is the choice of each county and the machine that best fits the needs of that county will be the one purchased. We left the conference feeling quite good about the move ahead. We went back to our individual counties to prepare for all the changes that were to come.

The registration clerks went to the high schools to register students during May. They went to 6 of the 12 schools and registered 214 students.

Our region which includes Oswego, St Lawrence, Lewis, Clinton, Franklin, Essex, and Jefferson County had a regional meeting in August in Canton with Pat Murray and Todd Valentine from the State BOE as guests. This meeting was held so our region could discuss HAVA concerns and what was needed to prepare ourselves for the new laws..

Before we could get into the many future changes we needed to survive the petition period. Designating petition signatures began June 7. During the July 12 through 14 filing of these petitions our office received 6 designating petitions for 5th Judicial and State Committee, (160) Republican petitions for Committee, (46) Conservative petitions for Committee, (181) designating petitions for 22 townships, (38) designating petitions for 12 villages, and (6) petitions for the City of Watertown city council. All together there were (483) designating

petitions. In August during the Independent Petition filing we received (1) Independent petition for Legislator, (9) Independent petitions for the 22 townships, and (5) independent petitions for the 12 villages. There were (2) Republican caucus and (7) Democrat caucus in the townships and (3) Republican caucus and (6) Democrat caucus in the villages. There were 21 primary elections in September - (2) for Legislator, (1) for city council, (16) in the towns, and (2) in the villages. There was one objection to a petition which was upheld (not enough signatures), one petition disqualified because it was witnessed by the candidate who was not a member of that party, and one petition disqualified because there was no authorization received.

We got through the petition period only to be staring at "budget time". We found it somewhat difficult setting up a budget when we weren't sure of what or how we were going to be doing the election. We ended up asking for two new employees (one from each party), \$10.00 per hour for our election inspectors for election days with a flat fee of \$30.00 for attending school, two county custodians at \$3,000 per year, six town custodians at \$2,000 per year, and all party representatives at a flat fee of \$50.00. We increased almost every line in the budget. Our largest line item increase besides salaries was travel and training. We always work hard to stay under budget whenever possible, but it feels good to know we should have enough for everyone to get the correct training to make our transition as painless as possible. Our budget was passed and we are very thankful to our legislators and administration for their kind understanding of the difficulty we are facing.

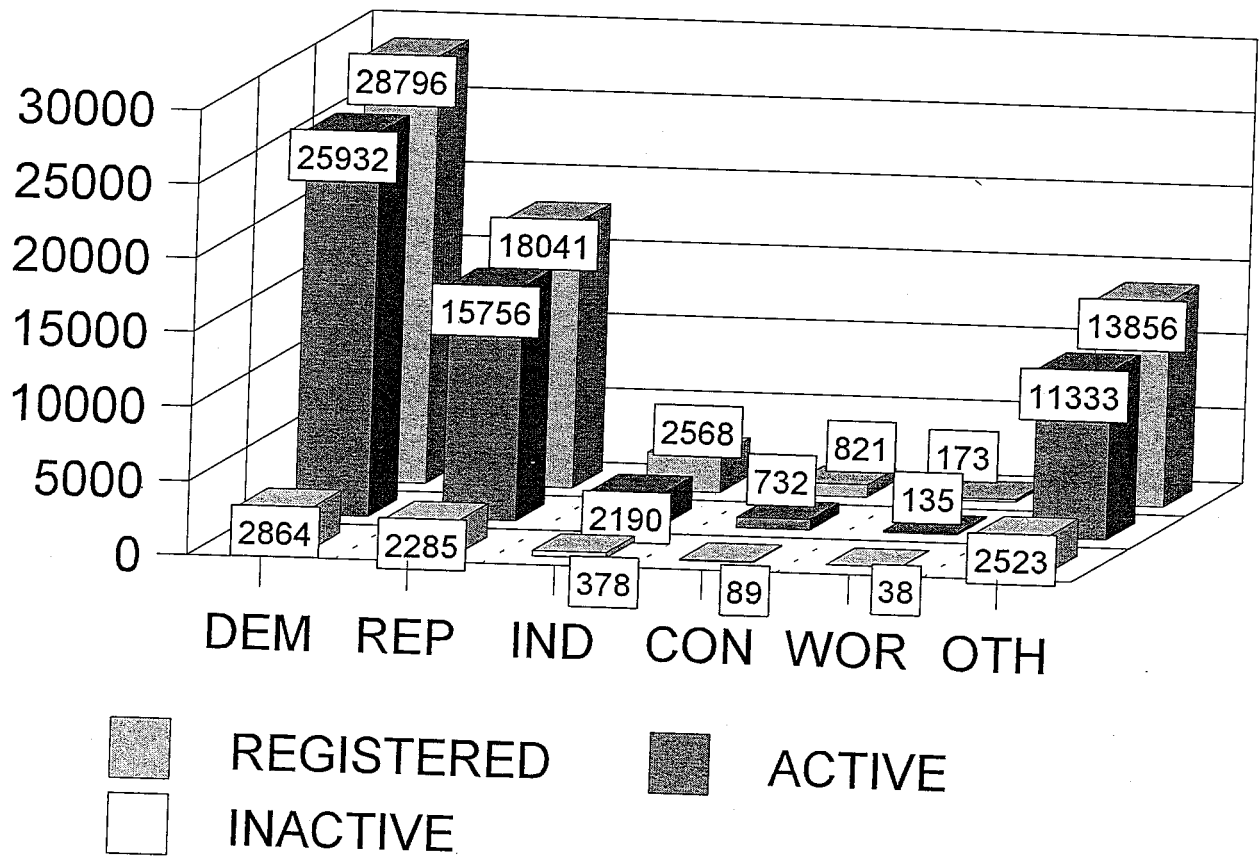
September - October - November - December

We had a Primary Election in the City of Watertown, twelve townships, and two villages.

We had another regional meeting in October to discuss the new laws on the NYS Board data base and the effect on the counties. There were two representatives there from the NYS Board of Elections and two from the consulting company of Gartner, Inc. who the SBOE has hired for implementation assistance for a statewide voter registration system. We invited our county IT person to join us so they would know what was going to be expected of them and to voice any concerns they might have.

November elections went very well. We had very few problems and the problems we had were small. After Election Day we cleaned up and counted votes. We were done in time to relax and celebrate Thanksgiving and Christmas.

VOTER REGISTRATION



Jefferson County Board of Elections
 Voter Demographic by County Wide

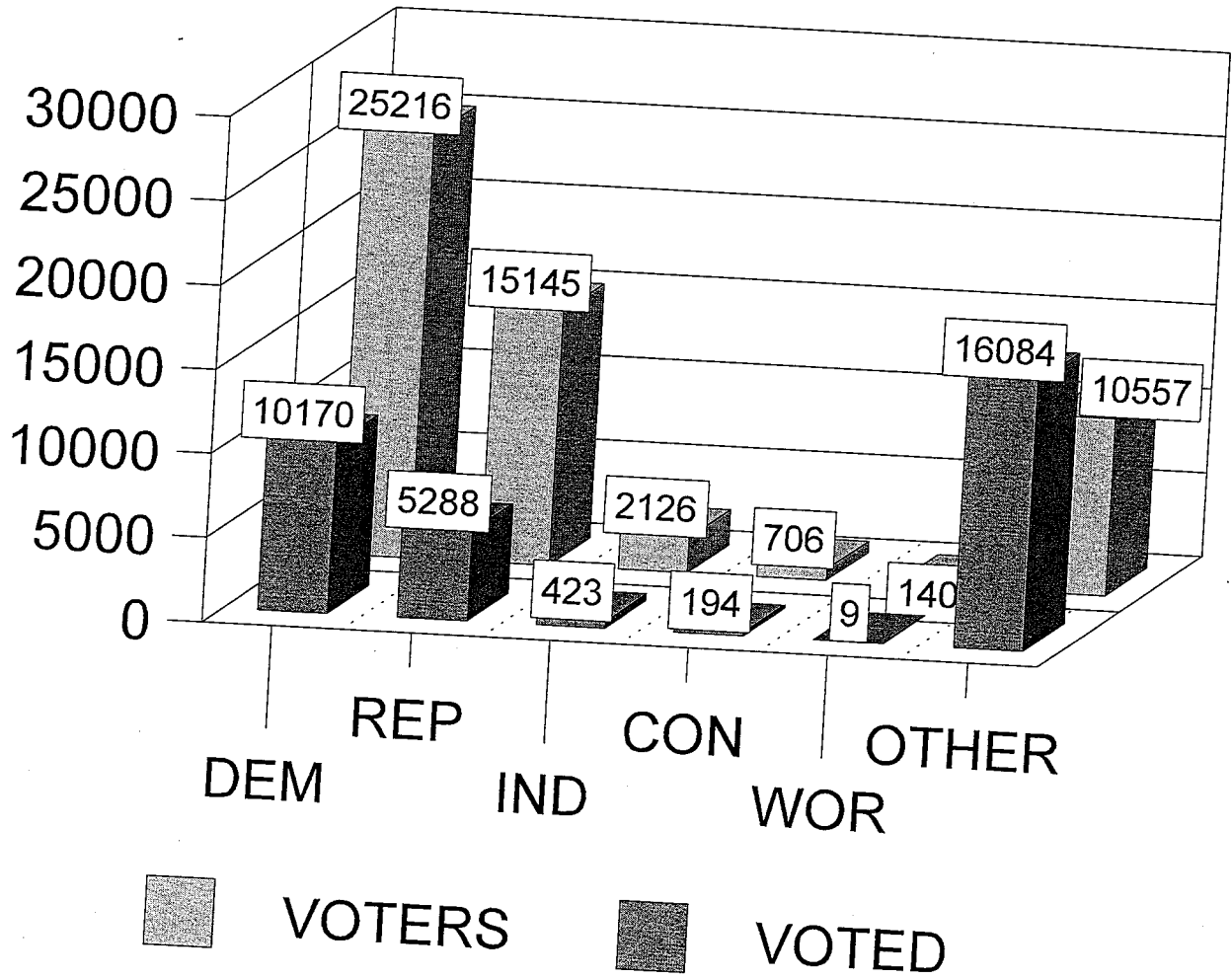
Active & Inactive Voters

Voters Registered on or before 11/08/2005

Party	0 - 18	19	20	21	22 - 24	25 - 34	35 - 44	45 - 54	55 - 64	65 - 74	75 - over	No DOB	Totals
Unknown	0	0	0	0	1	0	1	0	1	0	0	0	3
Republican	84	196	249	293	1,158	4,296	5,701	5,586	4,369	2,645	3,110	1,101	28,788
Democrat	78	181	223	236	941	3,041	3,162	3,501	2,710	1,440	1,805	656	17,974
Independence Party	21	47	62	73	266	701	568	444	251	96	77	1	2,607
Conservative	1	3	8	8	26	145	189	195	135	62	35	9	816
Working Families	0	1	2	2	22	64	50	33	3	4	0	0	181
Green	3	4	3	5	49	57	23	16	8	2	4	0	174
Liberal	0	5	6	9	30	143	110	124	54	17	25	0	523
Right to Life	0	0	2	3	12	64	46	40	26	13	7	0	213
Blank	14	18	18	30	140	1,703	1,347	1,451	925	367	303	47	6,363
No Party	100	267	287	303	1,163	1,938	1,095	621	349	143	76	3	6,345
Marijuana Reform	0	0	0	0	0	1	0	0	0	0	0	0	1
Libertarian	0	0	0	0	0	3	0	0	0	0	0	0	3
OTHER - Voter	1	3	1	1	5	7	2	0	1	1	0	0	22

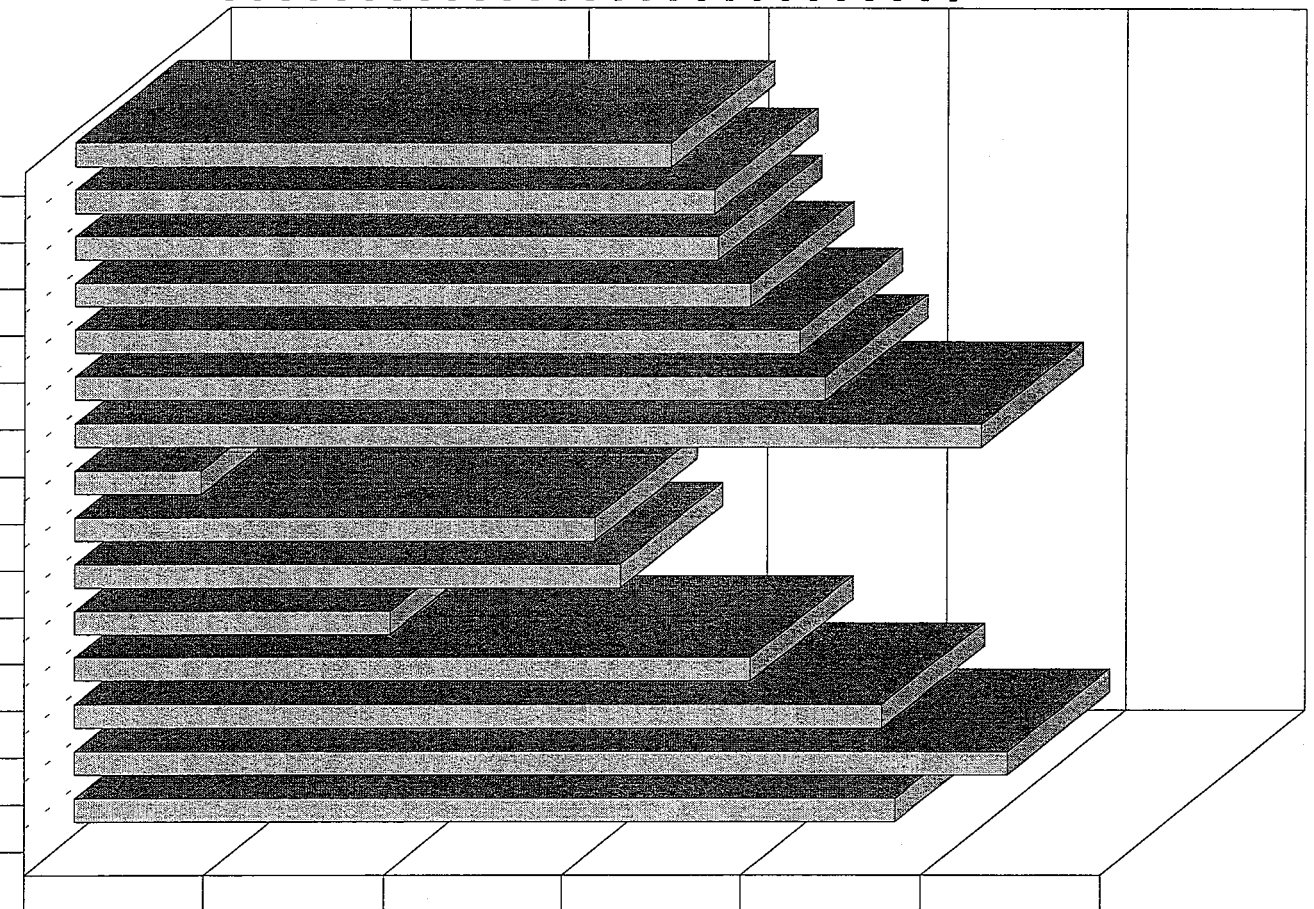
Report Totals	0 - 18	19	20	21	22 - 24	25 - 34	35 - 44	45 - 54	55 - 64	65 - 74	75 - over	No DOB	Totals
	302	725	861	963	3,813	12,163	12,294	12,011	8,832	4,790	5,442	1,818	64,014

VOTER TURNOUT



REGISTRATION BY LD 2005

LD15
LD14
LD13
LD12
LD11
LD10
LD9
LD8
LD7
LD6
LD5
LD4
LD3
LD2
LD1



0 1000 2000 3000 4000 5000 6000



REGISTERED VOTERS

Jefferson County Board Of Elections
Voter Statistics by County Legislative Districts

Voter Status of A - Active

<u>Name</u>	<u>Total</u>
County Legislative District #001	
County Legislative District #002	4,571
County Legislative District #003	5,195
County Legislative District #004	4,495
County Legislative District #005	3,765
County Legislative District #006	1,749
County Legislative District #007	3,040
County Legislative District #008	2,899
County Legislative District #009	700
County Legislative District #010	5,043
County legislative District #011	4,176
County Legislative District #012	4,034
County Legislative District #013	3,761
County Legislative District #014	3,581
County Legislative District #015	3,560
	3,321
Total	<u>53,890</u>

In our ongoing efforts to address post-election questions and issues, we are hoping to collect information from you and your board, which will help craft our responses. There is a great deal more election-related scrutiny of late, and it is important for all of us that answers come from us, based on information provided by you. You are welcome to elaborate on any of the answers you provide here, by attaching additional sheets, as necessary.

2005 REGISTRATION-RELATED ISSUES

Snapshot

how many voters contacted you prior to election day, for any of the following reasons:

caller claims to have mailed you a reg form, but you have no such record 0

caller claims to have registered at a community registration drive, but you have no record 0

caller claims to have registered at DMV, but you have no record 0

caller claims to have registered at another agency site, but you have no record for them 0

how many of the DMV-related calls were you able to resolve prior to election day 0

how many of the agency-related calls were you able to resolve prior to election day 0

Did you contact our NVRA unit, to try to resolve any of these issues:

and: N/A

how many voters contacted you on election day, for any of the following reasons:

caller claims to have mailed you a reg form, but you have no such record 0

caller claims to have registered at a community registration drive, but you have no record 0

caller claims to have registered at DMV, but you have no record 0

caller claims to have registered at another agency site, but you have no record for them 0

On election day, did the judges assigned to your board use the special DMV number to verify statements made by voters who were seeking court orders because of a DMV issue? YES / NO

How many of the DMV inquiries made by your election day judges revealed that voters had indeed checked the YES box, opting for voter registration, but no form had been forwarded to you? 0

As always, your cooperation is appreciated.

2005 Agency-Based Registration Experiences

"The Director's Cut"

COUNTY

Jefferson

DATE

1/31/06

We have advised you many times in the past, to advise us of agency and DMV problems, by noting in the comment section of your transmittals (batches are not forwarded in a timely way, forms are incomplete, deadlines are missed, etc.) We trust you do this at present, and for those who do not, we encourage you to do so, as each transmittal is reviewed when received, and such comments are reviewed and addressed with the particular site. In this manner, we can attempt to resolve issues throughout the year, so as to avoid election day problems. Your accuracy and frankness are essential to our ability to use this information for the best possible purposes. Unless otherwise indicated, please base your responses on your experiences at the November 8 General Election.

DMV Section

How many people contacted you prior to election day, to claim they had registered at DMV, but were not on file with you? 0

- Of these, how many were you able to research? 0
- How many had indeed been to DMV and COMPLETED the registration part of a license transaction which was not forwarded to you? 0

That would mean that 0 of these complaints revealed that the individual had not completed a transaction which resulted in an opportunity to register.

- How many of your pre-election DMV problems were you able to resolve, so that these persons could vote on Election Day? (For example, you had time to get them a new form before the registration deadline, a court-ordered registration, etc) 0

On Election Day, how many 'alleged' DMV customers claimed to have completed a form, but whose names were not in your poll books? 0

- Of these, how many voted by court order (on the machine)? 0
- How many voted a court-ordered affidavit ballot? 0
- Did the judges(s) assigned to you on Election Day use the special DMV phone number to research the claims of these persons? YES _____ NO _____
- How many of your Election Day complainants actually completed DMV transactions which were not forwarded to you? 0
- How many of them were found to not have completed a transaction that would have registered them to vote? (either checked NO on their DMV paperwork: 0, or did not conduct a license-related transaction at which voter registration is required to be offered? 0)

Please share with us any comments you have concerning the DMV voter registration program:

We have had no problems with our DMV.

Agency-Based Section

How many people contacted you prior to election day, to claim they had registered at an agency site other than DMV, but were not on file with you? 0

- Of these, how many were you able to research? 0
- How many had indeed been to an agency-based site and COMPLETED the registration part of a license transaction which was not forwarded to you? 0

That would mean that 0 of these complaints revealed that the individual had not completed a transaction which resulted in an opportunity to register.

- How many of your pre-election agency-based problems were you able to resolve, so that these persons could vote on Election Day? (For example, you had time to get them a new form before the registration deadline, a court-ordered registration, etc) 0

On Election Day, how many 'alleged' agency-based customers claimed to have completed a form, but whose names were not in your poll books? 0

- Of these, how many voted by court order (on the machine)? 0
- How many voted a court-ordered affidavit ballot? 0

- What criteria, if any, did the judges(s) assigned to you on Election Day use to grant court orders?
It was heard on a voter to voter Basis.
18, reside in County 30 days.

- How many of your Election Day complainants actually completed agency-based transactions which were not forwarded to you? 0
- How many of them were found to not have completed a transaction that would have registered them to vote? 0

Please share with us any comments you have concerning the agency-based voter registration program:
Very few problems with Agency Base registration
We had 1 group of forms we received too late to
be eligible for election.

Please attach additional sheets, if necessary, to explain issues or offer extended comments.

**2005 HAVA-COMPLIANCE SURVEY
ID VERIFICATION**

COUNTY Jefferson

DATE 1/31/06

AT THE TIME OF THIS PAST GENERAL ELECTION, HOW MANY VOTERS WERE FLAGGED AS 'ID REQUIRED' IN YOUR POLL BOOKS? 417

■ OF THOSE, HOW MANY SHOWED ID AND VOTED ON THE MACHINE? 22

■ OF THOSE, HOW MANY WERE REQUIRED TO VOTE BY AFFIDAVIT BALLOT? 0

IN 2005, HOW MANY RECORDS DID YOU FORWARD TO US FOR MATCHING AT DMV? 4,086

■ OF THOSE RECORDS FORWARDED TO US, HOW MANY WERE MATCHED? 4,060

ARE YOU STILL SENDING US RECORDS FOR DMV-MATCHING PURPOSES? (CIRCLE ONE, PLEASE) YES NO

■ IF YOU ANSWERED NO, DO YOU PLAN TO? YES NO

ON AN ADDITIONAL PAGE, PLEASE SHARE ANY THOUGHTS YOU HAVE CONCERNING THIS ASPECT OF HAVA COMPLIANCE IN YOUR COUNTY.

2005 HAVA-COMPLIANCE SURVEY - POSTING

COUNTY Jefferson

DATE 2/28/06

DID YOU REPRODUCE THE MASTER "VOTER'S BILL OF RIGHTS" FOR POSTING IN EACH OF YOUR POLL SITES?

YES

NO

- IF YOU ANSWERED NO, DID YOU COMPLY WITH THIS REQUIREMENT BY PRODUCING A POSTING OF YOUR OWN?

YES

NO

- IF YOU PRODUCED YOUR OWN VERSION, PLEASE INCLUDE A COPY OF THE POSTING YOU CREATED.

HOW DID YOU ENSURE THAT INSPECTORS POSTED THE BILL OF RIGHTS WHICH YOU PROVIDED? PLEASE ELABORATE:

DID YOU PRESENT THE REQUIRED 'NOTICE TO VOTERS' (WHICH WE SENT YOU AS SEVERAL MASTERS) IN A FORMAT WHICH ALLOWED THE VOTER TO TAKE A COPY OF SAME HOME?

YES

NO

- IF YOU ANSWERED YES, PLEASE SEND US A COPY OF WHAT YOU PROVIDED.

HAVE YOU SENT LETTERS TO ALL AFFIDAVIT VOTERS ADVISING THEM OF WHETHER OR NOT THEIR BALLOT WAS COUNTED?

YES

NO

- IF YOU ANSWERED NO, WHEN DO YOU PLAN TO SEND THOSE LETTERS? _____

HAVE YOU RECEIVED CALLS FROM VOTERS ASKING ABOUT THE STATUS OF THEIR AFFIDAVIT BALLOT?

YES

NO

- IF YOU ANSWERED YES, HOW MANY CALLS HAVE BEEN RECEIVED? _____

ON AN ADDITIONAL PAGE, PLEASE SHARE ANY THOUGHTS YOU HAVE CONCERNING THIS ASPECT OF HAVA COMPLIANCE IN YOUR COUNTY.

2005 Local HAVA Implementation

County Jefferson Date 2/28/06

In light of the HAVA federal legislation which we have been discussing with you at conferences and regular meetings since 2002, have you had discussions with your local legislative leaders on transfer of ownership of voting machines to your Board, as now required by statute?

YES NO

Have you included any requests for HAVA related funding in your budget proposal to your local legislators? YES NO

Did your local legislators include HAVA relating funding in their most recent budgets? YES NO

Have you had any discussions and/or made any progress or decisions to centralize all election services at your County Board?

YES NO

Details: Election services will be centralized in 2006.
Funds were budgeted and towns were notified.

If you have prepared anything in writing on this topic, for either your legislative leaders or for in-house discussions, please forward a copy with this completed survey.

Please use additional sheets, if necessary, to answer or elaborate on any of these questions.

Thank You !!

2005 MAIL CHECK CERTIFICATION/SURVEY DOCUMENT

COUNTY: Jefferson

DATE: 2/28/06

Date 2005 Mail Check cards were mailed: 8/15/05

Total number of cards mailed out: 54,189

Do you send your mail check by household? YES NO OR

Do you send individual cards? YES NO

Total number of cards returned to your board: 4,787

Of this total number returned, how may represented:

Transfers (movers) within your county: 2,145

Moves outside your county: 2,603

Undeliverable, non-forwardable, etc. _____

Miscellaneous returns (typos, 911's, etc.) 39

Please share with us, in this space, comments or any particular problems or successes you experienced in the conduct of this year's mail check.

Failure to file this report creates a presumption that the Board did not mail the communication to the registered voters in the year specified. Any false information made in this statement may be punishable as a Class A misdemeanor under Section 210.45 of the Penal Law.

Sandra L. Corey
Commissioner, Deputy

Paul J. Corbett
Commissioner, Deputy

2005 Cancellation Survey

County Jefferson Date 2/28/06

Number of records canceled in 2005 9,497
due to the following reasons:

deceased 659

personal request 3

felony convictions 29

judged incompetent 0

moved out of the county 399

(and based on information the voter provided to you)

purged 8,286

(Inactive voters who had not voted in 2 previous federal elections)

other Incomplete, Duplicate 121

(please define 'other')

Incomplete - 73

Duplicates - 48

2005 ANNUAL STATISTICAL INFORMATION REPORT

COUNTY Jefferson

DATE 2/28/06

FINANCIAL SUMMARY

BUDGET

TOTAL BUDGET FOR 2005	\$ 275,776
AMOUNT 2005 BUDGET INCREASE OR (DECREASE) FROM LAST YEAR'S BUDGET	\$ 31,283 +
AMOUNT APPROPRIATED FOR 2005	
SALARIES	\$ 145,134
PRINTING	\$ 42,500
SUPPLIES	\$ 4,250
TRAINING	\$ 2,750

STAFF SUMMARY

COMMISSIONERS

DEMOCRATIC COMMISSIONER SALARY	\$ 2,490
REPUBLICAN COMMISSIONER SALARY	\$ 2,490
2 OR 4 YEAR TERM	2 yr.
FULL OR PART TIME	part time

DEPUTY COMMISSIONERS

DEMOCRATIC DEPUTY SALARY	\$ 35,562
REPUBLICAN DEPUTY SALARY	\$ 35,562
FULL OR PART TIME	Full time

EMPLOYEES (EXCLUDE COMMISSIONERS & DEPUTIES)

NUMBER OF FULL-TIME BOARD EMPLOYEES	2
NUMBER OF PART-TIME BOARD EMPLOYEES	4
NUMBER OF TEMPORARY OR SEASONAL BOARD EMPLOYEES	35

INSPECTOR INFORMATION SUMMARY

TRAINING AND SALARY

NUMBER OF INSPECTORS APPOINTED	364
NUMBER OF INSPECTORS ATTENDING CLASS	253
NUMBER OF INSPECTORS WHO TOOK EXAM	-
NUMBER OF INSPECTORS WHO FAILED EXAM	0
NUMBER OF ALTERNATE INSPECTORS APPOINTED AND TRAINED	56
NUMBER OF CLASSES HELD	6

CLASS SIZE	52
AVERAGE LENGTH OF CLASS SESSION	3 hrs
AVERAGE SALARY RANGE (IF YOU HAVE A COUNTY-WIDE SALARY, ENTER THAT AMOUNT IN BOTH THE HIGH AND LOW BOX) Per hour	LOW HIGH \$[6.66] \$[11.00]
RATE OF PAY FOR INSPECTORS ATTENDING TRAINING SESSION	Varied
NUMBER OF PEOPLE WHO CHECK MAIL REG OR CALLED BECAUSE OF MAIL CHECK CARD ASKING TO BE PUT ON LIST AS INSPECTOR	27

POLLING SITE / VOTING EQUIPMENT SUMMARY

NUMBER OF POLLING SITES IN COUNTY	61
NUMBER OF POLLING SITES ACCESSIBLE TO PERSONS WITH DISABILITIES	61
NUMBER OF ELECTION DISTRICTS IN COUNTY	91
NUMBER OF EDs IN WHICH 2 OR MORE VOTING MACHINES ARE UTILIZED	Ø
TOTAL NUMBER OF VOTING MACHINES IN COUNTY	101
NUMBER OF VOTING MACHINES ACCESSIBLE TO PERSONS WITH DISABILITIES	30

PETITIONS

DESIGNATING PETITIONS

NUMBER RECEIVED	509
NUMBER CHALLENGED	2
NUMBER OF SPECS FILED	2
NUMBER INVALIDATED BY BOARD	2
NUMBER OF COURT CASES	Ø
NUMBER OF CASES UPHOLDING BOARD POSITION	Ø
NUMBER OF CASES REVERSING BOARD POSITION	Ø

INDEPENDENT PETITIONS

NUMBER RECEIVED	14
NUMBER CHALLENGED	Ø
NUMBER OF SPECS FILED	Ø
NUMBER INVALIDATED BY BOARD	Ø
NUMBER OF COURT CASES	Ø
NUMBER OF CASES UPHOLDING BOARD POSITION	Ø
NUMBER OF CASES REVERSING BOARD POSITION	Ø

CAUCUS CERTIFICATES

NUMBER RECEIVED	18
NUMBER CHALLENGED	Ø
NUMBER OF SPECS FILED	Ø
NUMBER INVALIDATED BY BOARD	Ø
NUMBER OF COURT CASES	Ø
NUMBER OF CASES UPHOLDING BOARD POSITION	Ø
NUMBER OF CASES REVERSING BOARD POSITION	Ø

CAMPAIGN FINANCE SUMMARY

NUMBER OF COUNTY COMMITTEE FILERS	8
NUMBER OF CANDIDATE FILERS	55
NUMBER OF PAC FILERS	44
TOTAL NUMBER OF FILINGS RECEIVED	99
OF TOTAL FILINGS, NUMBER THAT WERE "IN-LIEU-OF" FILINGS	38
NUMBER OF FIVE-DAY LETTERS SENT	Ø
NUMBER OF CURRENT DELINQUENT FILINGS	Ø
NUMBER REFERRED TO COUNTY ATTORNEY OR DA	Ø

ABSENTEE AND AFFIDAVIT BALLOT SUMMARY

SEPTEMBER PRIMARY ABSENTEE / SPECIAL BALLOTS

NUMBER OF NEW APPLICATIONS RECEIVED	127
NUMBER OF BALLOTS MAILED, VOTED AT BOARD, ETC.	561
NUMBER OF BALLOTS RETURNED	247
NUMBER INVALIDATED (NOT SIGNED, DATED AFTER ELECTION, ETC.)	7
NUMBER OF VOTERS WHO VOTED IN PERSON AFTER VOTING ABSENTEE	Ø

SEPTEMBER PRIMARY AFFIDAVITS

NUMBER OF AFFIDAVITS RECEIVED	Ø
NUMBER OF AFFIDAVITS COUNTED FOR TRANSFERS / MOVERS	Ø
NUMBER OF AFFIDAVITS COUNTED FOR OTHER REASONS	Ø

REASONS FOR REJECTION

TOTAL PRIMARY AFFIDAVITS REJECTED	4
NUMBER NOT SIGNED	0
NUMBER NOT IN DISTRICT	0
NUMBER FILLED OUT INCORRECTLY	0
NUMBER NOT PROPERLY ENROLLED	4
MISCELLANEOUS	0

SEPTEMBER PRIMARY COURT ORDERS

TOTAL COURT ORDERS PROCESSED	0
------------------------------	---

GENERAL ABSENTEE / SPECIAL BALLOTS

NUMBER OF NEW APPLICATIONS RECEIVED	729
NUMBER OF BALLOTS MAILED, VOTED AT BOARD, ETC.	1778
NUMBER OF BALLOTS RETURNED	1103
NUMBER INVALIDATED (NOT SIGNED, DATED AFTER ELECTION, ETC.)	14
NUMBER OF VOTERS WHO VOTED IN PERSON AFTER VOTING ABSENTEE	2

GENERAL AFFIDAVITS

NUMBER OF AFFIDAVITS RECEIVED	68
NUMBER OF AFFIDAVITS COUNTED FOR TRANSFERS / MOVERS	50
NUMBER OF AFFIDAVITS COUNTED FOR OTHER REASONS	5

REASONS FOR REJECTION

TOTAL NUMBER OF GENERAL AFFIDAVITS REJECTED	13
NUMBER NOT SIGNED	0
NUMBER NOT IN DISTRICT	5
NUMBER FILLED OUT INCORRECTLY	1
MISCELLANEOUS	7

GENERAL COURT ORDERS

TOTAL COURT ORDERS PROCESSED	-12
------------------------------	-----

NURSING HOMES ABSENTEE BALLOT PROGRAM

WE PERSONALLY VISIT NURSING HOMES TO DISTRIBUTE ABSENTEE BALLOTS	YES [] NO [X]
NUMBER OF HOMES VISITED FOR SEPTEMBER PRIMARY	0
NUMBER OF HOMES VISITED FOR GENERAL	0
NUMBER OF BALLOTS PROCESSED - PRIMARY AND GENERAL TOGETHER	0

REGISTRATION AND ENROLLMENT SUMMARY

REGISTRATION

TOTAL NUMBER OF CENTRAL (IN OFFICE) REGISTRATION FORMS PROCESSED	201
TOTAL NUMBER OF MAIL FORMS PROCESSED	10,856

FORMS DISTRIBUTION

TOTAL NUMBER OF MAIL FORMS USED	11,478
NUMBER OF FORMS ISSUED TO GROUPS	1,575
NUMBER OF FORMS USED IN YOUR OWN OUTREACH PROGRAMS (BANKS, POST OFFICES, TOWN / CITY HALLS, ETC.)	3,775

REGISTRATION SUMMARY FROM ALL SOURCES

NUMBER OF NEW REGISTRATIONS PROCESSED IN 2005	2,324
NUMBER OF MOVERS WITHIN YOUR COUNTY PROCESSED IN 2005	3,466
TOTAL NUMBER OF ENROLLMENT CHANGES	772
TOTAL NUMBER OF NAME CHANGES	483
TOTAL NUMBER OF DUPLICATES	346
TOTAL NUMBER OF OTHERS	26,982

CONFIRMATION NOTICES

TOTAL NUMBER OF CONFIRMATION NOTICES SENT IN 2005	9,515
NUMBER OF PERSONS RE-REGISTERED AS A RESULT OF YOUR CONFIRMATION NOTICE	246

CANCELLATIONS

TOTAL NUMBER OF REGISTRATIONS CANCELLED	9,432
NUMBER OF CANCELLATION NOTICES SENT TO OTHER COUNTRIES	746
NUMBER OF CANCELLATION NOTICES SENT TO SBOE FOR OTHER STATES	399
NUMBER OF PERSONS CANCELLED BY RETURNING POSTAGE-PAID CARD IN CONFIRMATION NOTICE	127

GENERAL INFORMATION

NUMBER OF MILITARY VOTERS ON FILE IN YOUR COUNTY	526
NUMBER OF PERM/DISABLED VOTERS ON FILE IN YOUR COUNTY	591
NUMBER OF SPECIAL FEDERAL VOTERS ON FILE IN YOUR COUNTY	35
TOTAL NUMBER OF INACTIVE VOTERS ON FILE AS OF DECEMBER 31, 2005	10,659
DO YOU RUN VILLAGE ELECTIONS? (12 of 20)	YES [<input checked="" type="checkbox"/>] NO []
DO YOU HAVE A WEB SITE? (IF YES, PLEASE PROVIDE WEB PAGE ADDRESS BELOW)	YES [<input checked="" type="checkbox"/>] NO []

WEB SITE ADDRESS: WWW.CO.JEFFERSON,NY.US

2005 AFFIDAVIT BALLOT REVIEW

COUNTY Jefferson DATE 1/31/06

To answer these questions, please use data from the General Election held on November 8, 2005.

Number of affidavits processed by your Board 68

Number of affidavits determined to be valid 55

Of those valid ballots, how many were:

in-county movers	<u>50</u>
miscellaneous poll book errors	<u>0</u>
re-activation of an inactive voter	<u>3</u>
other	<u>2</u>

If you entered a number for "other," what might those other reasons be, for ruling the affidavit "valid"?

N/A

Number of affidavits determined to be invalid 13

Of those invalid ballots, how many were:

not completed properly by the voter	<u>1</u>
not completed properly by the inspectors	<u>6</u>
not registered at all, in your county	<u>0</u>
other	<u>6</u>

If you entered a number for "other," what might those other reasons be, for ruling the affidavit invalid?

Did not go to correct district

Any thoughts or comments you would like to share, concerning affidavit ballots?

To answer these questions, please use data from the Primary held in September, 2005

Number of affidavits processed by your Board

0

Number of affidavits determined to be valid

0

Of those valid ballots, how many were:

in-county movers

miscellaneous poll book errors

re-activation of an inactive voter

other

If you entered a number for "other," what might those other reasons be, for ruling the affidavit "valid"?

Number of affidavits determined to be invalid

0

Of those invalid ballots, how many were:

not completed properly by the voter

not completed properly by the inspectors

not registered at all, in your county

enrolled in wrong party

other

If you entered a number for "other," what might those other reasons be, for ruling the affidavit invalid?

Any thoughts or comments you would like to share, concerning affidavit ballots?

2005 Military Absentee Ballot Review

COUNTY Jefferson

DATE 1/31/06

To answer the following questions, please use data from the GENERAL Election held on November 8, 2005:

Number of Military ballots mailed out by your Board 512

Number of voted Military ballots received by your Board 74

Of those voted ballots, how many were not counted because they

failed to contain a postmark	<u>0</u>
were not signed	<u>1</u>
other reasons which prohibited counting	<u>1</u>

What were those other reasons?

Postmarked to Late

Base the answers to the following questions on data from the PRIMARY Election held on September 13, 2005:

Number of Military ballots mailed out by your Board 186

Number of voted Military ballots received by your Board 24

Of those voted ballots, how many were not counted because they

failed to contain a postmark	<u>0</u>
were not signed	<u>0</u>
other reasons which prohibited counting	<u>3</u>

What were those other reasons?

Postmarked to Late to Count

2005 Voting Machine Breakdown Review

County Jefferson Date 2/28/06

For your responses to most of the questions in this survey, please use data based on General Election Day of November 8. You will note that in some cases, questions will pertain to the most recent Primary Election. Please answer accordingly, and, as always, thank you for your cooperation.

Number of election districts in your county. 91

Number of voting machines in use on Election Day in your county. 91

Total number of voting machine "problems" in your county. 3

Number of problems relating to:

mistakes in machine set-ups	_____
cross-endorsement straps that failed	_____
curtain cords	_____
actual mechanical breakdowns	_____
other	_____

Explain "other" problems Opening machines - inspectors seem to have problems - They have step by step instructions but often don't read them.

Average interruption (in minutes) of voter service 15 min approx.

Did any machines have to be replaced on Election Day because of the problems identified above? YES _____ NO ✓

If YES, number of machines needing replacement. _____

When a machine problem occurs, do your inspectors immediately offer EMERGENCY BALLOTS?

YES NO

When a machine problem occurs, do your inspectors immediately contact custodians or technicians to come fix the problem?

YES NO

Do you require your inspectors to call you before they go into "emergency mode" or after they perform the above two procedures?

BEFORE AFTER

Comments or thoughts you would like to share regarding your emergency procedures. Feel free to attach copies of any procedures you provide to your inspectors.

Number of voting machines in use on General Election Day which still had primary election results on them. 0

If answer is other than zero, how was this problem resolved?

Please share with us your thoughts concerning machine breakdowns in this most recent General Election. _____

In general, to what or whom can your machine problems be attributed?

In that your custodians / technicians are on-call on any election day, where are they stationed? City + County Custodians in BOE office,
Town custodians at home -

How do you (or your inspectors) contact them? (Cell phones, pagers, etc.)
Telephone for towns

Have you used our suggested "crash kit" concept for emergencies? (Zip-lock bag with special instructions for inspectors, emergency ballots, privacy envelopes, etc.)

YES _____ NO

Do you provide individual privacy envelopes for emergency ballot voters to use?

YES NO _____

Have you created any special tools or "kit" for emergency ballot situations? Please provide a description or samples, if possible.

No

Any general thoughts or comments concerning voting machines or other issues raised in this survey? _____